

# Accessory Catalog

# LXE<sup>®</sup>

## TX700 & TX800 VX8 & VX9

Updated: January 2009

## POWER SUPPLIES

**VX89A301PSDC9TO36V**



DC/DC Power supply, 9-36V, 60W

*Note: Power cable is provided with the computer.*

**VX89A302PSDC48V**



DC/DC Power supply, 18-60V, 60W

*Note: Power cable is provided with the computer.*

**VX89A303PSDC60TO11DV**



DC/DC Power supply, 50-150V, 60W

*Note: Power cable is provided with the computer.*

**VX89A304PSACWW**



TX700, TX800, VX8, VX9

AC Power Supply with 3 option input power cords

- US plug type (3 prong)
- European Schuko CEE77 plug type (2 prong)
- UK & Ireland BS1363 (3 pin blade)

VX89A351BLANKINGBOX



TX700, TX800, VX8, VX9

Screen blanking box

Blanks the screen when vehicle is moving.

Wiring instructions are included in the box.

**Wire and mounting hardware not included.**

VX89A352BLANKBOXU60



TX700, TX800, VX8, VX9

Screen blanking box for China

Blanks the screen when vehicle is moving.

Wiring instructions are included in the box.

**Wire and mounting hardware not included.**

## KEYBOARDS

VX89A151KBDSTDTD9ADP



TX700, VX9

LXE rugged keyboard with adapter cable.

VX89A152KBDSTDDINADP



TX800, VX8

LXE rugged keyboard with adapter cable.

VX89A153KBDMOUD9ADP



TX700, VX9

LXE laptop style keyboard with adapter cable.

VX89A154KBDMOUDINAPTR



TX800, VX8

LXE laptop style keyboard with adapter cable.

VX89A155KBDCHERRY84



Cherry brand 84-key slim line keyboard

No adapter cable.

VX89A156KBDDEKORSY86



Dekorsy brand 86-key keyboard

No adapter cable.

VX89A157KBDCHERRY84T7



Cherry brand 84-key slim line keyboard

Includes adapter cable for TX700 and VX9.

VX89A158KBDDEK86T7



Dekorsy brand 86-key keyboard

Includes adapter cable for TX700 and VX9.

[Please see Appendix for on screen software keyboard options.](#)

# MOUNTING KITS WITH KEYBOARD MOUNTING PLATE

## VX89A015KIT15



Generic keyboard plate with short arm & Ram ball.  
For use with non-LXE brand keyboards.

QTY	MODEL #	DESCRIPTION
1	VX89A505RAMARM	Length 3.7" (94mm) - Fits C-size Ram ball
1	VX89A041RAMBALL	C-size - 1.5" (38mm)
1	VX89A534MNTGPLATE	Generic keyboard mounting plate

## VX89A016KIT16



Generic keyboard plate with medium arm & Ram ball.  
For use with non-LXE brand keyboards.

QTY	MODEL #	DESCRIPTION
1	VX89A504RAMARM	Length 5.7" (145mm) - Fits C-size Ram ball
1	VX89A041RAMBALL	C-size - 1.5" (38mm)
1	VX89A534MNTGPLATE	Generic keyboard mounting plate

## VX89A017KIT17



Generic keyboard plate with long arm & Ram ball.  
For use with non-LXE brand keyboards.

QTY	MODEL #	DESCRIPTION
1	VX89A506RAMARM	Length 9.1" (231mm) - Fits C-size Ram ball
1	VX89A041RAMBALL	C-size - 1.5" (38mm)
1	VX89A534MNTGPLATE	Generic keyboard mounting plate

## VX89A019KIT19



**TX700, TX800, VX8, VX9 Mounting Kit 19**  
Single 2.25" (57mm) Ram ball style mounting plate with generic keyboard attachment.  
Attaches directly to back of computer.

QTY	MODEL #	DESCRIPTION
1	162617-0001	Single Ram ball computer plate
1	VX89A505RAMARM	Length 3.7" (94mm) - Fits C-size Ram ball
2	VX89A041RAMBALL	C-size - 1.5" (38mm)
1	VX89A534MNTGPLATE	Generic keyboard mounting plate

## VX89A020KIT20



**TX700, TX800, VX8, VX9 Mounting Kit 20**  
This kit includes a plate that attaches directly to the back of the computer. The large Ram ball shipped with computer attaches to this plate to mount to truck and the small Ram ball found in this kit is for the keyboard attachment.

QTY	MODEL #	DESCRIPTION
1	162617-0001	Computer back mounting plate with keyboard
1	VX89A041RAMBALL	C-size - 1.5" (38mm)

**VX89A021KIT21****TX700, TX800, VX8, VX9 Mounting Kit 21**

QTY	MODEL #	DESCRIPTION
1	162617-0001	Single Ram ball computer plate
1	VX89A504RAMARM	Length 5.7" (145mm) - Fits C-size Ram ball
1	VX89A501RAMARM	Length 8.5" (216mm) - Fits D-size Ram ball
1	VX89A041RAMBALL	C-size - 1.5" (38mm)
1	VX89A030RAMBALL	D-size - 2.25" (57mm)
1	9000A029RAMKBDPLATE-R	LXE brand keyboard plate with hardware

**VX89A022KIT22****TX700, TX800, VX8, VX9 Mounting Kit 22**

QTY	MODEL #	DESCRIPTION
1	162617-0001	Single Ram ball computer plate
1	VX89A504RAMARM	Length 5.7" (145mm) - Fits C-size Ram ball
1	VX89A503RAMARM	Length 13" (330mm) - Fits D-size Ram ball
1	VX89A041RAMBALL	C-size - 1.5" (38mm)
1	VX89A030RAMBALL	D-size - 2.25" (57mm)
1	9000A029RAMKBDPLATE-R	LXE brand keyboard plate with hardware

**VX89A023KIT23****TX700, TX800, VX8, VX9 Mounting Kit 23**

QTY	MODEL #	DESCRIPTION
1	162617-0001	Single Ram ball computer plate
1	VX89A504RAMARM	Length 5.7" (145mm) - Fits C-size Ram ball
1	VX89A501RAMARM	Length 8.5" (216mm) - Fits D-size Ram ball
1	VX89A041RAMBALL	C-size - 1.5" (38mm)
1	VX89A031RAMBALL	D-size - 2.25" (57mm) - Squeeze clamp base
1	9000A029RAMKBDPLATE-R	LXE brand keyboard plate with hardware

**VX89A021KIT21****VX89A022KIT22****VX89A023KIT23**

TX800 shown in pictures but also fits TX700, VX8, & VX9



**VX89A024KIT24**



**VX89A026KIT26**



**VX89A025KIT25**

TX800 shown in pictures but also fits TX700, VX8, & VX9

**VX89A024KIT24**



**TX700, TX800, VX8, VX9 Mounting Kit 24**

QTY	MODEL #	DESCRIPTION
1	162617-0001	Single Ram ball computer plate
1	VX89A504RAMARM	Length 5.7" (145mm) - Fits C-size Ram ball
1	VX89A503RAMARM	Length 13" (330mm) - Fits D-size Ram ball
1	VX89A041RAMBALL	C-size - 1.5" (38mm)
1	VX89A031RAMBALL	D-size - 2.25" (57mm) - Squeeze clamp base
1	9000A029RAMKBDPLATE-R	LXE brand keyboard plate with hardware

**VX89A025KIT25**



**TX700, TX800, VX8, VX9 Mounting Kit 25**

QTY	MODEL #	DESCRIPTION
1	162617-0001	Single Ram ball computer plate
1	VX89A505RAMARM	Length 3.7" (94mm) - Fits C-size Ram ball
1	VX89A501RAMARM	Length 8.5" (216mm) - Fits D-size Ram ball
1	VX89A041RAMBALL	C-size - 1.5" (38mm)
1	VX89A030RAMBALL	D-size - 2.25" (57mm)
1	VX89A010KIT10	Generic keyboard plate C-size 1.5" (38mm) Ram ball

**VX89A026KIT26**



**TX700, TX800, VX8, VX9 Mounting Kit 26**

QTY	MODEL #	DESCRIPTION
1	162617-0001	Single Ram ball computer plate
1	VX89A505RAMARM	Length 3.7" (94mm) - Fits C-size Ram ball
1	VX89A503RAMARM	Length 13" (330mm) - Fits D-size Ram ball
1	VX89A041RAMBALL	C-size - 1.5" (38mm)
1	VX89A030RAMBALL	D-size - 2.25" (57mm)
1	VX89A010KIT10	Generic keyboard plate C-size 1.5" (38mm) Ram ball

**VX89A028KIT28****TX700, TX800, VX8, VX9 Mounting Kit 28**

QTY	MODEL #	DESCRIPTION
1	162617-0001	Single Ram ball computer plate
1	VX89A505RAMARM	Length 3.7" (94mm) - Fits C-size Ram ball
1	VX89A501RAMARM	Length 8.5" (216mm) - Fits D-size Ram ball
1	VX89A041RAMBALL	C-size - 1.5" (38mm)
1	VX89A031RAMBALL	D-size - 2.25" (57mm) - Squeeze clamp base
1	VX89A010KIT10	Generic keyboard plate C-size 1.5" (38mm) Ram ball

**VX89A029KIT29****TX700, TX800, VX8, VX9 Mounting Kit 26**

QTY	MODEL #	DESCRIPTION
1	162617-0001	Single Ram ball computer plate
1	VX89A505RAMARM	Length 3.7" (94mm) - Fits C-size Ram ball
1	VX89A503RAMARM	Length 13" (330mm) - Fits D-size Ram ball
1	VX89A041RAMBALL	C-size - 1.5" (38mm)
1	VX89A031RAMBALL	D-size - 2.25" (57mm) - Squeeze clamp base
1	VX89A010KIT10	Generic keyboard plate C-size 1.5" (38mm) Ram ball

**VX89A010KIT10****TX700, TX800, VX8, VX9 Mounting Kit 10**

For generic keyboard with C-size 1.5" (38mm) Ram ball.  
Use when mounting non-LXE keyboards.

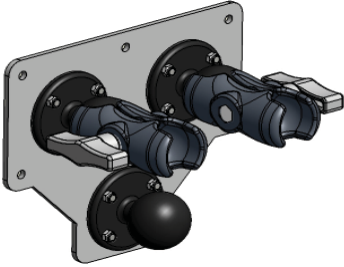
QTY	MODEL #	DESCRIPTION
1	VX89A041RAMBALL	C-size - 1.5" (38mm)
1	VX89A534MNTGPLATE	Attachment plate

**VX89A028KIT28****VX89A029KIT29**

TX800 shown in pictures but also fits TX700, VX8, & VX9

# MOUNTING KITS WITH RAM BALL FOR KEYBOARD MOUNTING

**VX89A007KIT07**

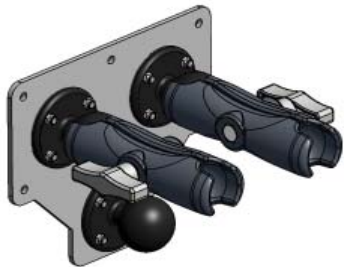


**TX700, TX800, VX8, VX9 Mounting Kit 07**

Can be used with dual Ram ball back option on computer.  
Includes 3rd Ram ball for keyboard mounting attachment.

QTY	MODEL #	DESCRIPTION
2	VX89A505RAMARM	Length 3.7" (94mm)
3	VX89A041RAMBALL	C-size - 1.5" (38mm)
1	VX89A533MNTGPLATE	Attachment plate

**VX89A008KIT08**

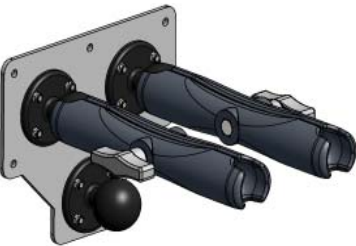


**TX700, TX800, VX8, VX9 Mounting Kit 08**

Can be used with dual Ram ball back option on computer.  
Includes 3rd Ram ball for keyboard mounting attachment.

QTY	MODEL #	DESCRIPTION
2	VX89A504RAMARM	Length 5.7" (145mm)
3	VX89A041RAMBALL	C-size - 1.5" (38mm)
1	VX89A533MNTGPLATE	Attachment plate

**VX89A009KIT09**

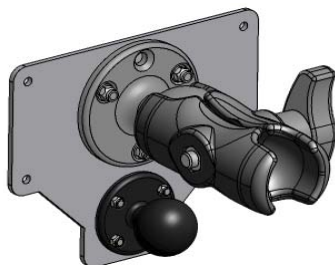


**TX700, TX800, VX8, VX9 Mounting Kit 09**

Can be used with dual Ram ball back option on computer.  
Includes 3rd Ram ball for keyboard mounting attachment.

QTY	MODEL #	DESCRIPTION
2	VX89A506RAMARM	Length 9.1" (231mm)
3	VX89A041RAMBALL	C-size - 1.5" (38mm)
1	VX89A533MNTGPLATE	Attachment plate

**VX89A011KIT11**

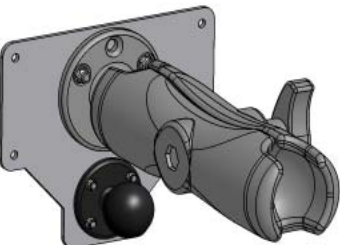


**TX700, TX800, VX8, VX9 Mounting Kit 11**

Can be used with single Ram ball back option on computer.  
Includes 2nd Ram ball for keyboard mounting attachment.

QTY	MODEL #	DESCRIPTION
1	VX89A502RAMARM	Length 5" (127mm)
1	VX89A041RAMBALL	C-size - 1.5" (38mm)
1	VX89A030RAMBALL	D-size - 2.2.5" (57mm)
1	VX89A536MNTGPLATE	Attachment plate

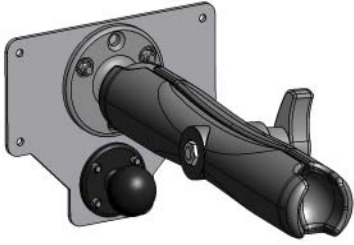
**VX89A012KIT12**



**TX700, TX800, VX8, VX9 Mounting Kit 12**

Can be used with single Ram ball back option on computer.  
Includes 2nd Ram ball for keyboard mounting attachment.

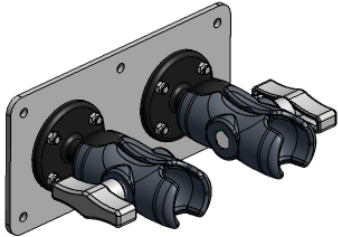
QTY	MODEL #	DESCRIPTION
1	VX89A501RAMARM	Length 8.5" (216mm)
1	VX89A041RAMBALL	C-size - 1.5" (38mm)
1	VX89A030RAMBALL	D-size - 2.2.5" (57mm)
1	VX89A536MNTGPLATE	Attachment plate

**VX89A013KIT13****TX700 and TX800 Mounting Kit 13**

Can be used with single Ram ball back option on computer.  
Includes 2nd Ram ball for keyboard mounting attachment.

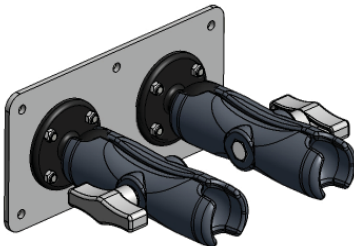
QTY	MODEL #	DESCRIPTION
1	VX89A503RAMARM	Length 13" (330mm)
1	VX89A041RAMBALL	C-size - 1.5" (38mm)
1	VX89A030RAMBALL	D-size - 2.2.5" (57mm)
1	VX89A536MNTGPLATE	Attachment plate

## MOUNTING KITS WITHOUT KEYBOARD OPTIONS

**VX89A001KIT01****TX700, TX800, VX8, VX9 Mounting Kit 01**

Can be used with dual Ram ball back option on computer.

QTY	MODEL #	DESCRIPTION
2	VX89A505RAMARM	Length 3.7" (94mm)
2	VX89A041RAMBALL	C-size - 1.5" (38mm)
1	VX89A532MNTGPLATE	Attachment plate

**VX89A002KIT02****TX700, TX800, VX8, VX9 Mounting Kit 02**

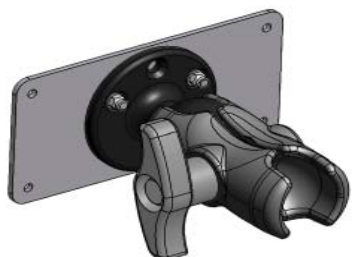
Can be used with dual Ram ball back option on computer.

QTY	MODEL #	DESCRIPTION
2	VX89A504RAMARM	Length 5.7" (145mm)
2	VX89A041RAMBALL	C-size - 1.5" (38mm)
1	VX89A532MNTGPLATE	Attachment plate

**VX89A003KIT03****TX700, TX800, VX8, VX9 Mounting Kit 03**

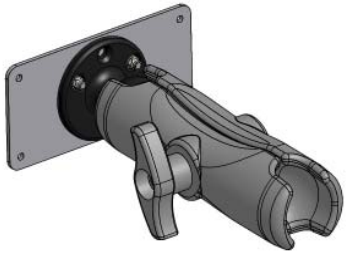
Can be used with dual Ram ball back option on computer.

QTY	MODEL #	DESCRIPTION
2	VX89A506RAMARM	Length 9.1" (231mm)
2	VX89A041RAMBALL	C-size - 1.5" (38mm)
1	VX89A532MNTGPLATE	Attachment plate

**VX89A004KIT04****TX700, TX800, VX8, VX9 Mounting Kit 04**

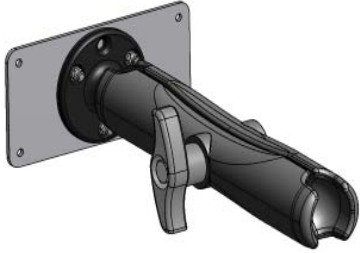
Can be used with single Ram ball back option on computer.

QTY	MODEL #	DESCRIPTION
1	VX89A502RAMARM	Length 5" (127mm)
1	VX89A030RAMBALL	D-size - 2.25" (57mm)
1	VX89A535MNTGPLATE	Attachment plate

**VX89A005KIT05****TX700, TX800, VX8, VX9 Mounting Kit 05**

Can be used with single Ram ball back option on computer.

QTY	MODEL #	DESCRIPTION
1	VX89A501RAMARM	Length 8.5" (216mm)
1	VX89A030RAMBALL	D-size - 2.25" (57mm)
1	VX89A535MNTGPLATE	Attachment plate

**VX89A006KIT06****TX700, TX800, VX8, VX9 Mounting Kit 06**

Can be used with single Ram ball back option on computer.

QTY	MODEL #	DESCRIPTION
1	VX89A503RAMARM	Length 13" (330mm)
1	VX89A030RAMBALL	D-size - 2.25" (57mm)
1	VX89A535MNTGPLATE	Attachment plate

**VX89A014KIT14****TX700, TX800, VX8, VX9 Mounting Kit 14**

Table stand with arm

QTY	MODEL #	DESCRIPTION
1	VX89A503RAMARM	Length 13" (330mm)
1	VX89A037RAMBALL	D-size - 2.25" (57mm)
1	VX89A531MNTGPLATE	9" x 9" (229mm x 229mm) Metal table stand

## INDIVIDUAL PARTS

**VX89A041RAMBALL**

C-size 1.5" (38mm) Ram ball

2.5" (64mm) Round diameter base

**VX89A030RAMBALL**

D-size 2.25" (57mm) Ram ball

3.68" (93mm) Round diameter base

**VX89A034RAMBALL**



**C-size 1.5" (38mm) Ram ball - Squeeze clamp style**

**2.5" (64mm) Base (width)**

**Hardware included**

**VX89A031RAMBALL**



**D-size 2.25" (57mm) Ram ball - Squeeze clamp style**

**2.5" (64mm) Base (width)**

**Hardware included**

This Ram ball is used on the truck to clamp to either a roof support beam or other similar post.

**VX89A035RAMBALL**



**C-size 1.5" (38mm) Ram ball - Square base style**

**4.75" (121mm) Square base**

**Hardware NOT included**

**VX89A032RAMBALL**



**D-size 2.25" (57mm) Ram ball - Square base**

**4.75" (121mm) Square base**

**Hardware NOT included**

This Ram ball attaches to vehicle either via 9000A033BACKUPPLATE or by drilling or attaching directly.

**VX89A036RAMBALL**



**C-size 1.5" (38mm) Ram ball - Pipe clamp style**

**Clamp fits 1.25" (32mm) to 1.875" (48mm) pipe.**

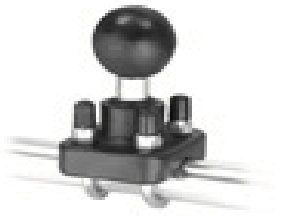
**VX89A033RAMBALL**



**D-size 2.25" (57mm) Ram ball - Pipe clamp style**

**Fits pipes 1.25" (32mm) to 1.875" (48mm) wide**

**VX89A042RAMBALL**



**C-size 1.5" (38mm) Ram ball - Pipe clamp style**

Fits pipes .75" (19mm) to 1.25" (32mm)

**VX89A040RAMBALL**



**D-size 2.25" (57mm) Ram ball - Pipe clamp style**

Fits pipes 2" (51mm) to 2.5" (64mm).

**VX89A039RAMBALL**



**C-size 1.5" (38mm) Ram ball - Offset square base**

3.625" (92mm) Square base

**VX89A037RAMBALL**



**D-size 2.25" (57mm) Ram ball - Small round base**

2.44" (62mm) Round diameter base

This Ram ball is made for table stand VX89A014KIT14

**VX89A038RAMBALL**



**D-size 2.25" (57mm) Ram double ball**

Can be used between two Ram arms to get additional length or additional mounting flexibility.

**VX89A505RAMARM**



**Short length arm - Fits C-size 1.5" (38mm) Ram ball**

Length 3.7" (94mm)

<p><b>VX89A502RAMARM</b></p> 	<p>Short length arm - Fits D-size 2.25" (57mm) Ram ball</p> <p>Length 5" (127mm)</p>
<p><b>VX89A504RAMARM</b></p> 	<p>Medium length arm - Fits C-size 1.5" (38mm) Ram ball</p> <p>Length 5.7" (145mm)</p>
<p><b>VX89A501RAMARM</b></p> 	<p>Medium length arm - Fits D-size 2.25" (57mm) Ram ball</p> <p>Length 8.5" (216mm)</p>
<p><b>VX89A506RAMARM</b></p> 	<p>Long length arm - Fits C-size 1.5" (38mm) Ram ball</p> <p>Length 9.1" (231mm)</p>
<p><b>VX89A503RAMARM</b></p> 	<p>Long length arm - Fits D-size 2.25" (57mm) Ram ball</p> <p>Length 13" (330mm)</p>
<p><b>VX89A550RAMMISC</b></p> 	<p>Locking knob for use on C-size 1.5" (38mm) Ram mount arms.</p>

**9000A033BACKUPPLATE**



Backup plate - Set of 2

**Hardware included**

These two plates can be mounted on each side of the fork lift roof. Various Ram balls can be attached to these plates to avoid having to drill mounting holes or weld the fork lift.

**VX89A531MNTGPLATE**



Metal tabletop stand base

9" x 9" (229mm x 229mm) Base

Replacement base for VX89A014KIT14

*Note: The part shown is made of plastic. Actual part is made of metal.*

**VX89A532MNTGPLATE**



Replacement 2-arm style truck side plate

Used in: VX89A001KIT01  
VX89A002KIT02  
VX89A003KIT03

**VX89A533MNTGPLATE**



Replacement 2-arm & keyboard mount style truck mounting plate

Used in: VX89A007KIT07  
VX89A008KIT08  
VX89A009KIT09

**VX89A534MNTGPLATE**



Generic keyboard mounting replacement plate

Used in: VX89A010KIT10

**VX89A535MNTGPLATE**



Replacement single arm mounting style truck mounting plate

Used in: VX89A004KIT04  
VX89A005KIT05  
VX89A006KIT06

**VX89A536MNTGPLATE**



Replacement single arm & keyboard mounting style truck mounting plate

Used in: VX89A011KIT11  
VX89A012KIT12  
VX89A013KIT13

**VX89A537MNTGPLATE**



Generic keyboard mounting plate.

C-size 1.5" (38mm) Ram ball attaches to the bottom of the plate.

## CABLES

**VX89A051CBLUSB**



TX700, TX800, VX8, VX9

D15 to USB Type "A" cable, 8" (203mm)

This cable is only used with the 15 pin multi-purpose connector to access its USB port.

**VX89A052CBLRS232**



TX700, TX800, VX8, VX9

D15 to D9 Serial RS-232 cable, 8" (203mm)

This cable is only used with the 15 pin multi-purpose connector to access its serial port.

**VX89A053CBLCOMBO**



TX700, TX800, VX8, VX9

USB host & serial cable, 8" (203mm)

This cable is only used with the 15 pin multi-purpose connector to access its USB host and serial port.

VX89A055CBLPWRRANGLE



TX700, TX800, VX8, VX9

Power cable with right angle connector, 12' (4m)

This is a spare or replacement cable. This same cable ships with every computer.

VX89A056CBLKBDEXTD9



TX700, VX9

Keyboard and mouse extender cable - D9 to Din, 6.5' (1.9m)

VX89A057CBLKBDEXTPS2



TX800, VX8

Keyboard and mouse extender cable - Din to Din, 9' (2.7m)

VX89A058CBLD9TO2PS2



TX700, VX9

D9 to dual PS2 keyboard and mouse adapter cable.

This cable is required to use non-LXE brand keyboards with the TX700.

*Note: Some keyboard accessories already include this cable.*

VX89A073CBLKBDD9D9



TX700, VX9

LXE brand keyboard adapter cable, 8" (203mm)

*Note: Some LXE brand keyboard accessories already include this cable.*

VX89A074CBLKBDD9DIN



TX800, VX8

LXE brand keyboard adapter cable, 8" (203mm)

*Note: Some LXE brand keyboard accessories already include this cable.*

# REMOTE ANTENNAS

**VX89A276REMANT3METER**



802.11 a/b/g radio remote antenna kit (can be used with b/g or a/b/g radio)  
Fits TX700, TX800, VX8, VX9

QTY	MODEL #	DESCRIPTION
1		Antenna
1		Mounting bracket
1		<b>9' (3m) Antenna cable</b>

**VX89A277REMANT5METER**



802.11 a/b/g radio remote antenna kit (can be used with b/g or a/b/g radio)  
Fits TX700, TX800, VX8, VX9

QTY	MODEL #	DESCRIPTION
1		Antenna
1		Mounting bracket
1		<b>15' (5m) Antenna cable</b>

**VX89A281ABGFLEXANT**



Remote antenna for 802.11 b/g or a/b/g

**VX89A282ANTCBL3M**



Remote antenna cable for 802.11 b/g or a/b/g

9' (3m)

**VX89A283ANTCBL5M**



Remote antenna cable for 802.11 b/g or a/b/g

16' (5m)

**VX89A278REMWANANTUS**



GSM remote WAN radio antenna kit (For FCC approvals countries except Canada)

Cable length: 6.5' (1.9m)

*Note: This kit ships with each WAN enabled computer.*

Order this kit as a spare or replacement.

**VX89A279REMWANANTET**



GSM remote WAN radio antenna kit (For ETSI approvals countries)

Cable length: 6.5' (1.9m)

*Note: This kit ships with each WAN enabled computer.*

Order this kit as a spare or replacement.

**VX89A280ABGCONEANT**



802.11 a/b/g Cone type antenna

**VX89A284ANTSHORT8**

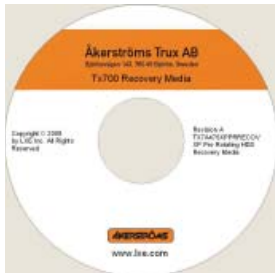


TX700, TX800, VX8, VX9

802.11 a/b/g Replacement computer antenna

## RECOVERY CDs

**TX7A476XPPRECOV**



TX700

XP Pro rotating drive

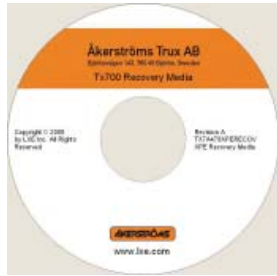
Recovery image

**TX7A477XPPFRECOV**



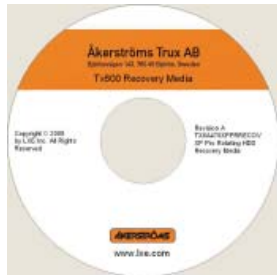
TX700  
XP Pro flash drive  
Recovery image

**TX7A478XPERECOV**



TX700  
XP Embedded  
Recovery image

**TX8A476XPPRRECOV**



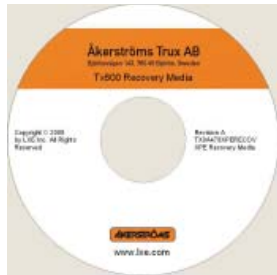
TX800  
XP Pro rotating drive  
Recovery image

**TX8A477XPPFRECOV**



TX800  
XP Pro flash drive  
Recovery image

**TX8A478XPERECOV**









TX800  
XP Embedded  
Recovery image

**TX78A498DRIVERS**



TX700, TX800  
Drivers

<p><b>VX8A476XPPRECOV</b></p>  <p>The image shows a CD-ROM with the following text: "VX8 Recovery Media", "Copyright © 2008 by LXETec. All Rights Reserved", "Revision A: VX8A476XPPRECOV OF The Flash BIOS Recovery Media", the LXE logo, and "www.lxe.com".</p>	<p>VX8</p> <p>XP Pro rotating drive</p> <p>Recovery image</p>
<p><b>VX8A477XPPFRECOV</b></p>  <p>The image shows a CD-ROM with the following text: "VX8 Recovery Media", "Copyright © 2008 by LXETec. All Rights Reserved", "Revision A: VX8A477XPPFRECOV OF The Flash BIOS Recovery Media", the LXE logo, and "www.lxe.com".</p>	<p>VX8</p> <p>XP Pro flash drive</p> <p>Recovery image</p>
<p><b>VX8A478XPERECOV</b></p>  <p>The image shows a CD-ROM with the following text: "VX8 Recovery Media", "Copyright © 2008 by LXETec. All Rights Reserved", "Revision A: VX8A478XPERECOV OF The Flash BIOS Recovery Media", the LXE logo, and "www.lxe.com".</p>	<p>VX8</p> <p>XP Embedded</p> <p>Recovery image</p>
<p><b>VX9A476XPPRECOV</b></p>  <p>The image shows a CD-ROM with the following text: "VX9 Recovery Media", "Copyright © 2008 by LXETec. All Rights Reserved", "Revision A: VX9A476XPPRECOV OF The Flash BIOS Recovery Media", the LXE logo, and "www.lxe.com".</p>	<p>VX9</p> <p>XP Pro rotating drive</p> <p>Recovery image</p>
<p><b>VX9A477XPPFRECOV</b></p>  <p>The image shows a CD-ROM with the following text: "VX9 Recovery Media", "Copyright © 2008 by LXETec. All Rights Reserved", "Revision A: VX9A477XPPFRECOV OF The Flash BIOS Recovery Media", the LXE logo, and "www.lxe.com".</p>	<p>VX9</p> <p>VX Pro flash drive</p> <p>Recovery image</p>
<p><b>VX9A478XPERECOV</b></p>  <p>The image shows a CD-ROM with the following text: "VX9 Recovery Media", "Copyright © 2008 by LXETec. All Rights Reserved", "Revision A: VX9A478XPERECOV OF The Flash BIOS Recovery Media", the LXE logo, and "www.lxe.com".</p>	<p>VX9</p> <p>XP Embedded</p> <p>Recovery image</p>



# APPENDIX:

## ON-SCREEN SOFTWARE KEYBOARD OPTIONS

### Option 001 - US English (Full Desktop Style)



### Option 002 - French (Desktop Style)



### Option 003 - Swedish (Alpha, Numbers, 12 Function Keys)



**Option 004 - Norwegian (Desktop Style)**



**Option 005 - Swedish (Alpha, 12 Function Keys)**



**Option 006 - US English (Alpha, Numbers, 9 Function Keys)**



**Option 007 - Polish (Alpha, Numbers)**



**Option 008 - German (Alpha, Numbers, 24 Function Keys)**



**Option 009 - Swedish (Alpha, Numbers, 12 Function Keys)**

